

User guide
DCarbon Gas Engine less than 6 litres

Less Pollutant & More Power

DCarbon 

When the product installation is complete, **you must not disconnect and reconnect the device**, it will affect the quality of results.

User guide

DCarbon Gas Engine less than 6 litres



Contenu

1. Introduction
2. Product
3. Benefits
4. Specifications
5. Installation
6. MPG Test
7. Result optimization
8. Most Frequent Questions
9. Warranty
10. Useful Information

Introduction

The product DCARBON is the result of 10 years of applied research and development of more than 2500 gasoline and diesel. **All applications** DCARBON are the exclusive property of the company **Industries ROGIL inc.** Since 2014, a version fully optimized for gas engines with a capacity of less than 6 liters is available.

The DCARBON product contribution is about the ENVIRONMENTAL short and long term performance of your engine. In fact it is a very profitable investment based on his lifetime of more than 10 years as it can accompany you on several vehicles and extend sustainable living. **Therefore, this product has a unique ENVIRONMENTAL contribution** both at the protection of exhaustible resources as its contribution to the AIR QUALITY, for the **health of the planet and humans in general.**

We recommend that you take some results on toxic emissions and fuel consumption of your engine before installing the product DCARBON so that you can more easily measure all the benefits.

We invite you to send us your testimonials by letter, email or by visiting our website www.dcarbondevice.com

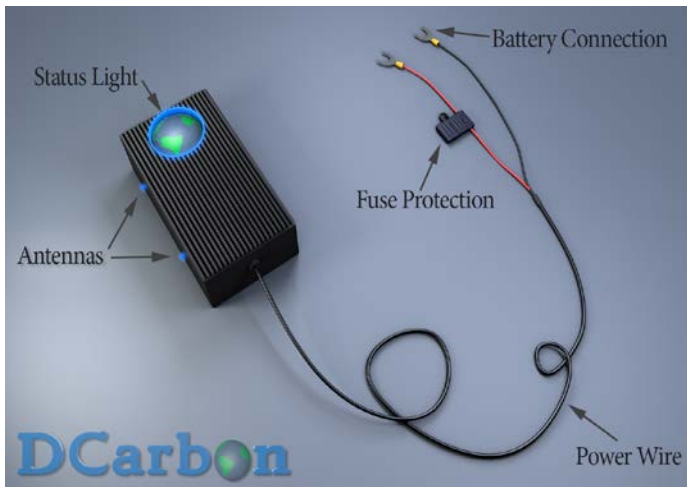
Centro de Investigación e Innovación Tecnológica
Secretaría de Posgrado e Investigación



EPA FTP 75 successful test in CIITEC Mexico laboratory

User guide

DCarbon Gas Engine less than 6 litres

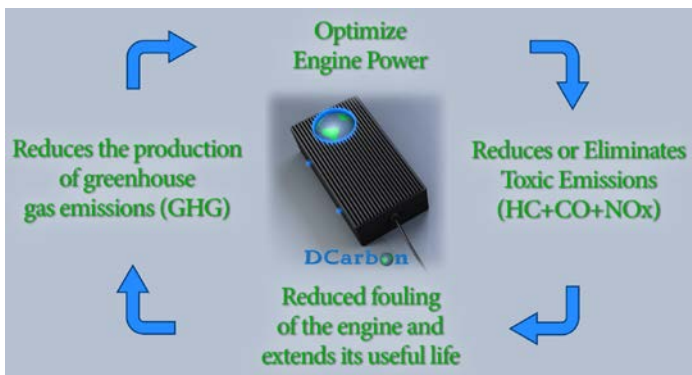


Product

The DCARBON product is a wave generator designed to improve fuel combustion, reducing harmful emissions, improve engines efficiency, ensure a constant self-cleaning of the internal parts of engines and their mechanical subsystems such injectors, cylinders, pistons, valves, oxygen sensors, catalysis, and the muffler.

The device DCARBON produces and emits continuously a specific frequency driven by the antennas. These waves are extremely stable and do not interfere with the mechanical, electronic or electrical systems.

A field is created as a harmonic of the resonance frequency of hydrogen bonds in the fuel, thus improving the energy content, thus enabling the improvement of the combustion efficiency.



Benefits

- Reduce toxics emission (HC + CO) up to 100% *!
- Improves engine performance!
- Improves the internal engine cleanliness!
- Improves catalysis efficiency!
- Quick and EASY installation!
- Re-install it on your next similar engine!
- Life time of 10 years and more!
- Manufactured in Canada!
- 100% RISK free!

Specifications

- Electronic military specifications
 - Thermal radiator
 - Rectifier of negative et positive current
 - Power supply 12 volts
 - Automatic detection and protection of low voltage (12.5 volts)
 - Detection and Automatic overheat protection
 - Operating conditions in the majority of vibration, humidity, heat or cold.
 - **Size of the housing** : 12,5 x 5 x 2,4 cm. (5 x 2 x 1 po.)
 - **Operating Temperature:** -30 à 120 Celcius (-22 à 250 Fahrenheit)
 - **Weight** : 0,68 Kilogramme (1,5 livre)
- Sizes dimensions and weight may vary

Description of components provided



- 1 DCARBON device
 - 2 large PVC attachments
 - 3 small PVC attachments
- * We do not repair engines in bad conditions**

User guide

DCarbon Gas Engine less than 6 litres

Less pollutant & More Power

Installation

<p>The DCARBON product is a modern technology and easy to install. We recommend that the product is installed near the entrance of the fuel line or the injection system. The antenna should not touch the metal component. The antennas are used to direct the waves produced to the motor.</p>	
<p>Installation near the entrance of the feed line or the injection system</p>	<p>Electrical connection to the vehicle battery</p>
	
<p>Install the product with the antennas directed towards the inlet line or fuel injection system. Fasten with plastic ties avoiding areas of intense heat.</p>	<p>Connect the power wire with fuse to the positive terminal of the battery and plug the other power cable to the negative terminal of the battery.</p>
<p>Confirmation of a successful installation</p>	
<p>Short term</p> <ul style="list-style-type: none"> • Increased production of water vapor at the exhaust pipe • Elimination / reduction of odors in the exhaust pipe • Increased transparency of emissions at the tailpipe • Increased engine power (torque) • Reduced engine noise • Increase the sensitivity of the accelerator • Elimination and or reduction of toxic emissions (HC, CO, NO_x) 	<p>Medium term</p> <ul style="list-style-type: none"> • Elimination / reduction of carbon residue in the exhaust pipe • Improvement of the overall performance of the engine (less GHG) • Improved TURBO efficiency <p>Recommendations</p> <ul style="list-style-type: none"> • Your results are always better over long distances. • It is always very difficult to verify the performance of your engine for journeys involving many stops and starts. • When the product installation is complete, you must not disconnect and reconnect the device, it will affect the quality of results.


User guide

DCarbon Gas Engine less than 6 litres

MPG Test

- A. Establishing a test circuit with starting from point A back to point A. (ideally 200 km and more)
- B. Do tests without and with the DCARBON product in similar weather conditions.
- C. Same driver, same load (passengers or others) and reproduction of the same speeds and travel times.
- D. Fill the tank full to the cap at each test period for valid comparable.
- E. Mark on each fuel bill: the amount of fuel in liter, odometer reading and the number of kilometers.

Do you know your car? Before checking the performance of your vehicle, visit www.fueleconomy.gov to know the MPG standards established by the U.S. EPA agency. Here is an example.



Equivalence des données EPA en MPG vs Litres & Kilomètres				
1	Mile	=	1,61	Kilomètres
1	Gallon US	=	3,785	Litres
Exemple de conversion des données EPA en MPG vs Litres - 100 Km				
MPG				Kilomètres
26	x	1,61	=	41,86
Gallon US				Litres
1	x	3,785	=	3,785
				9,04 L - 100 Km
Donc un MPG de 26 est l'équivalent de 9,04 Litres au 100 Kilomètres				

The product offers a better performance after 5-6 tanks of fuel. This ensures that all the self-cleaning effects are well done. If you do not get satisfactory results after this period, please refer to section Help to solve problems. Globally, you should know :

Once you have completed the installation of the product, avoid MUST disconnect and reconnect the device, it hinders the integration of technology in the environment of your engine.

Though, if you unplug the product, the performance will not decline at an early stage without the technology before an indefinite time which can be very variable in the time of connection. This similarly when you disconnect your water heater ... you continue to have hot water anyway, and this, for a time variable.

Here is a summary table of test data extracted from the U.S. EPA website www.fueleconomy.gov

City	Highway	High Speed	Air Conditioning	Cold Temperature	Detailed Comparison
Driving Schedule Attributes					
Test Schedule					
Driving Schedule Attributes	City	Highway	High Speed	AC	Cold Temp
Trip Type	Low speeds in stop-and-go urban traffic	Free-flow traffic at highway speeds	Higher speeds; harder acceleration & braking	AC use under hot ambient conditions	City test w/ colder outside temperature
Top Speed	56 mph	60 mph	80 mph	54.8 mph	56 mph
Average Speed	21.2 mph	48.3 mph	48.4 mph	21.2 mph	21.2 mph

Average speed 35 km / h - 80 km / h. The EPA tests are prepared in the laboratory under controlled conditions. The average speed in the city is 35 km / h and 80 km / h on the highway.

If you made a test drive of 200 km round trip at 110 km-h, according to the EPA you must add 7% additional consumption per 8 km-h over 80 km-h. So if you do this test at 110km-h - 80 km-h-h = 30 km, or 3.75 portions of 8 km-h, your speed add a total of + 26% additional consumption. If your EPA ratio is 9.04 L-100Km 80 km-h, it should be adjusted for comparison as follows: either 9.04 x 1.26 = 11.39 L-100Km. YOU must therefore compare yourself at 11.39 L-110 km-h

User guide

DCarbon Gas Engine less than 6 litres

Result Optimization

Résultats	Causes	Solutions
Excessive toxic pollutants (CO +HC) to the exhaust pipe	Product not working (less than .01% of cases).	Product replacement by the manufacturer
	Product not integrated with the engine computer	Basic Set up parameters to revise

Here are some situations that directly affect the performance of your engine:

- Poor air / fuel mixture
- Clogging of valves and injectors
- Problem ignition (timing and quality of candles)
- Cylinders and pistons dirty, worn parts (loss of compression)
- Turbo and Twin Turbo defective (if applicable)
- Oxygen sensor defective
- Faulty injector

We suggest that you always follow the recommendations of manufacturer regarding the maintenance of your vehicle

Q: What is the DCARBON product?

A: DCARBON is a wave generator designed to optimize the combustion of fuels, reducing toxic emissions, improve engine efficiency, ensure a permanent self-cleaning of the internal parts of engines and their subsystems such injectors, cylinders, pistons, valves, oxygen sensors, the turbo, the catalyts and the muffler.

Q: What is the operation mode of the DCARBON product?

A: DCARBON generates and radiates a specific frequency continuously directed by the antennas. These waves are extremely stable and do not interfere with the mechanical, electronic or electrical. A field is created as a harmonic the resonance frequency of hydrogen bonds in the fuel, thereby improving energy content, thus enabling the improvement of the combustion efficiency.

Q: Does the product DCARBON is difficult to install?

A: The product DCARBON is very easy to install, follow the user guide and appropriate video.

User guide

DCarbon Gas Engine less than 6 litres

Q: Is this product dangerous for my engine?

A: NO. DCARBON device will help your engine stay clean internally. Your candles and your many oxygen sensors will stay cleaner and will yield better returns in terms of combustion. This efficiency will result as cleaner injectors, pistons, cylinders, valves, oxygen sensors, turbo and also the entire exhaust system.

Q: What is the environmental contribution of DCARBON?

R: The DCARBON product contribution is about the ENVIRONMENTAL short and long term performance of your engine. In fact it is a very profitable investment based on his lifetime of more than 10 years as it can accompany you on several vehicles and extend sustainable living. **Therefore, this product has a unique ENVIRONMENTAL contribution** both at the protection of exhaustible resources as its contribution to the AIR QUALITY, **it is contributing also to the health of the planet and humans in general.**

Q: The indicator light remains lit when my engine is off. Is this going to affect my battery?

A: No, this is normal and safe. If the battery power drops below 12.5 volts, the internal security of the product DCARBON will turn on and the indicator light will shut down until the battery come back to 12,5 volts.

Warranties

Manufacturer's warranty in case of non-operation of the product is 12 months.

This limited warranty of 12 months applies to the replacement during the warranty period product with a defect in materials or workmanship. This warranty does not apply to damage resulting from misuse or unreasonable use. Defective product must be returned to the place where it was purchased, **accompanied by proof of purchase.**

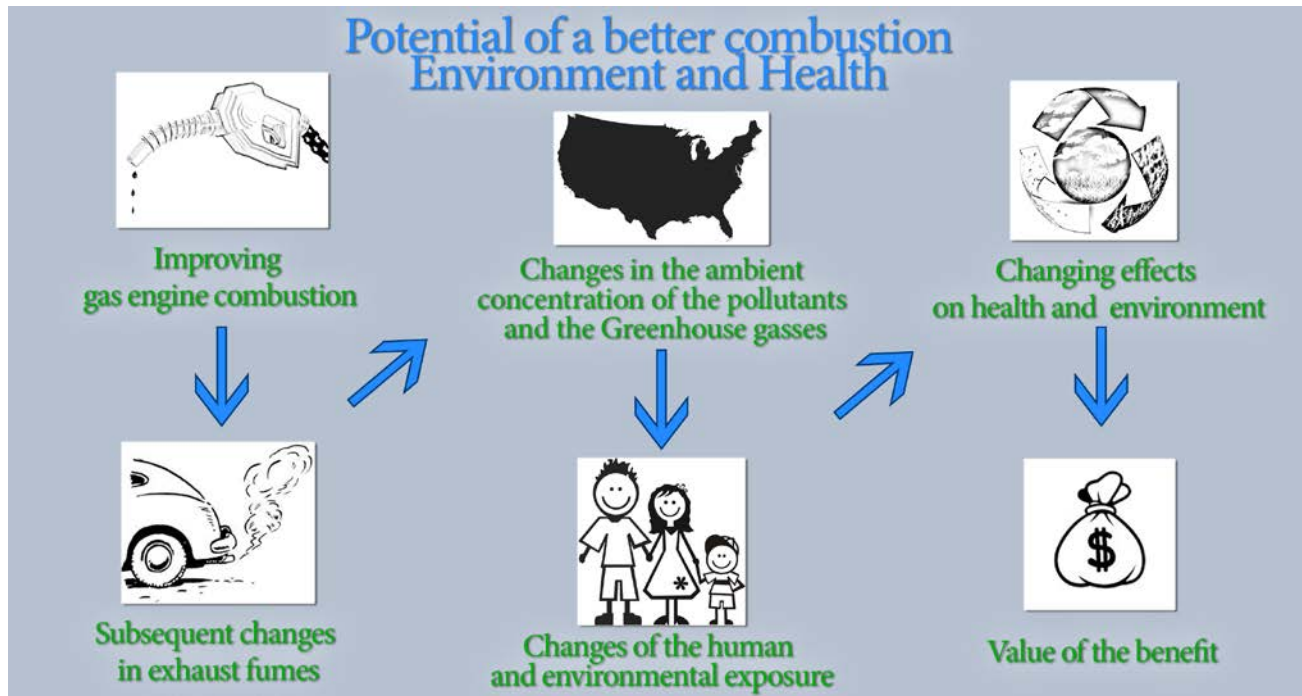
Satisfaction guarantee is 90 days. Any customer not satisfied has 90 days to request a refund of the cost of the product if it is not satisfied with the results. **We reserve the right to require proof that your vehicle has failed a test at the level of toxic emissions after performing a cumulative minimum of 3000 km road from the day of purchase,** only if this test is available in your country, region, city or village.

User guide

DCarbon Gas Engine less than 6 litres

IMAGINE A POSITIVE CLIMATE CHANGE with less HC, CO, and NOx produce by millions of vehicles **WORLDWIDE** using DCarbon !

The air pollution by more than 1 billion gasoline vehicles is a global curse that affects more or less seriously the health of all the world's inhabitants.



To illustrate one (1) potential impact of DCarbon, we will use only one (1) toxic and mortal emission: the Carbon Monoxide (CO) emission in a **City composed of 1 million vehicles** running an average **10,000 miles per year** and per vehicle. Based on EPA records, in 1950's, the emission standard was 87 gram per miles of Carbon Monoxide (CO). In comparison **in 2015-2019 the future USA** California emission standard is at a **maximum of 3.4 grams** per mile during a vehicle lifetime of 50,000 miles. Using this most recent metric for Carbon Monoxide (CO), this group of gas vehicles **will emit 34 millions kilograms of toxic and mortal CO in the AIR** per year, and up to 170 millions kilograms over 5 years.

IT'S TIME FOR A POSITIVE CLIMATE CHANGE! DCarbon can help reduce or eliminate this type of toxic emission up to 100%.

For warranties and information, contact or visit us at:

info@dcarbondevice.com www.dcarbondevice.com Tel 514-394-0724 Fax 514-394-0799

Industries ROGIL inc., 14041 rue Poitras,
Mirabel, Québec, Canada, J7N 1K7

Industries Megtech inc. , 740 Boul. Industriel Local 201
Blainville, Québec, Canada, J7C 3V3